

# H6 10 Series

## Human Machine Interface



### Human Machine Interface H610

TECO offers high resolutions touch screen HMI from 4.3" to 15", we adopt WinCE 6.0® system as a standard and support Ethernet, Modbus and most industrial communication protocols. Besides, our H610 provide **Remote Viewer** and **Historical Viewer** software which help user to manage variable applications. To enhance your value and performance, please choose our H610!

### Features

#### Communication

Ethernet, Modbus and most industrial protocols

#### Ability

Panel Studio ---  
Your reliable and practical solution

#### Convenient

Historical Viewer  
Remote Viewer

#### Protection

IP67 stainless steel front panel

#### Fineness

65,536 colors TFT  
Vector format symbols

#### Control

Control I/O easily





## Hardware SPEC.

5 models in 4 size 4.3", 7", 10", 15", 4 high-performance types (H610-045, 075, 105, 155), 1 standard type H610-073  
TFT touch panel, high resolutions up to 1024x768, 65,536 colors

Built in Ethernet(RJ45 port) and Modbus, support MPI/Profibus-DP, ProfiNet, DeviceNet, EtherNet/IP, CANopen, EtherCAT, BACnet/IP, CC-Link

2 serial ports (RS232 RS422 RS485), USB host for keypad, mouse, printer and USB drive, 1 SD slot (up to 32G)

## Software features

WinCE 6.0® OS

2-editing style in GUI and Property grid

112 vector format symbols and objects

Support bmp, wmf, jpg, gif & png format

Many PLC drivers supported on both Serial & Ethernet ports via OPC sever

Data exchange between 2 different PLC s as a gate way

Data stored in internal memory, SD card or USB drive

**Historical Viewer** for viewing history data

Security management, 100 users divided by 9 authority levels

Script/Marco programmed in C language

Support Unicode and 30 languages

Online and Offline simulation

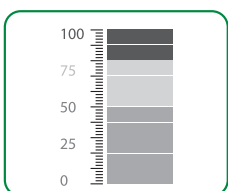
Download projects from PC to H610 via Ethernet port or USB stick

Multiple sessions to open projects in design time on PC

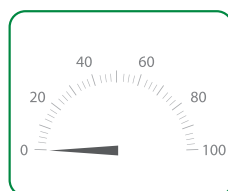
**Remote Viewer** for monitoring on site information

## Advanced objects

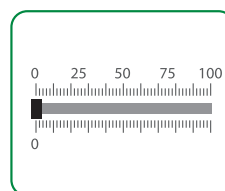
Level, Meter, Slider, Digital LED, Thermometer, Bar box, Scale, History trends, Real time trends, Picture box



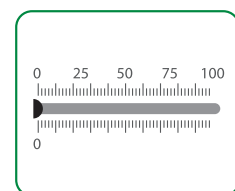
Level



Meter



Slider



Thermometer